



TREQA™

GEAR

CONTENTS

PRICE LIST

3-5

TENTS

- 6 MNR Series, 2-PERSON
- 7 Camping Series, 2-PERSON
- 8 Camping Series, 3-PERSON
- 9 Ontario Series, 3-PERSON
- 10 Ontario Series, 4-PERSON
- 11 Everest Series, 3-PERSON
- 12 Everest Series, 4-PERSON
- 13 Tundra Series, 5-PERSON
- 14 Wild Series, 2-PERSON
- 15 Light Series, 2-PERSON
- 16 Light Series, 3-PERSON
- 17 Ultra Light Series, 1-PERSON
- 18 Ultra Light Series, 2-PERSON
- 19 BASE 2, 2-PERSON

SHELTERS

- 20 Tundra Series
- 21 Bug Shelter, Small / Large
- 22 Universal Adjustable Poles

CAMPING FURNITURE

- 23 Basecamp Series, Chair
- 24 Basecamp Series, Swivel Chair
- 25 Basecamp Series, Cot
- 26 Basecamp Series, Table

MATS

- 27 Light Series Mat, 3.6 R-V
- 28 Light Series P-Mat, 3.6 R-V
- 29 Camping W Series Mat, 7.0 R-V
- 30 Camping W Series Mat, 8.0 R-V

BAGS AND PACKS

- 31 Aquaguard PRO Series 40L, 20L, 15L
- 32 Aquaguard PRO Canoe Pack 75L, 115L
- 33 Aquaguard PRO Duffle Bag

CAMPING ACCESSORIES

- 34 Extreme Sleeping Bag (600gsm, 800gsm, 1000gsm)
- 35 Camping Blanket
- 36 Phone Case
- 37 iPad Case, Notebook Case

PRICE LIST

TENTS



MNR SERIES 2M
Page 6
MSRP \$299.00



CAMPING SERIES 2P
Page 7
MSRP \$299.00



CAMPING SERIES 3M
Page 8
MSRP \$319.00



ONTARIO SERIES 3M
Page 9
MSRP \$345.00



ONTARIO SERIES 4M
Page 10
MSRP \$459.00



EVEREST SERIES 3P
Page 11
MSRP \$465.00



EVEREST SERIES 4P
Page 12
MSRP \$499.00



TUNDRA SERIES 5P
Page 13
MSRP \$749.00



WILD SERIES 2P
Page 14
MSRP \$269.00



LIGHT SERIES 2P
Page 15
MSRP \$409.00



LIGHT SERIES 3P
Page 16
MSRP \$435.00



ULTRA LIGHT SERIES 1P
Page 17
MSRP \$404.00



ULTRA LIGHT SERIES 2P
Page 18
MSRP \$440.00



BASE 2
Page 19
MSRP \$645.00

PRICE LIST

SHELTERS



TUNDRA SERIES
Page 20
MSRP \$245.00



BUG SHELTER
Page 21
MSRP \$179.00



BUG SHELTER
Page 21
MSRP \$219.00



**UNIVERSAL
ADJUSTABLE POLES**
Page 22
MSRP \$79.00

CAMPING FURNITURE



BASECAMP CHAIR
Page 23
MSRP \$135.00



**BASECAMP SWIVEL
CHAIR**
Page 24
MSRP \$159.00



BASECAMP COT
Page 25
MSRP \$200.00



BASECAMP TABLE
Page 26
MSRP \$99.00

MATS



LIGHT SERIES MAT
Page 27
MSRP \$119.00



LIGHT SERIES P-MAT
Page 28
MSRP \$129.00



**CAMPING W SERIES
MAT 7.0R-V**
Page 29
MSRP \$129.00



**CAMPING W SERIES
MAT 8.0R-V**
Page 30
MSRP \$169.00

PRICE LIST

BAGS AND PACKS



AQUAGUARD PRO
SERIES 40L
Page 31
MSRP \$225.00



AQUAGUARD PRO
SERIES 20L
Page 31
MSRP \$59.00



AQUAGUARD PRO
SERIES 15L
Page 31
MSRP \$49.00



AQUAGUARD PRO 75L
Page 32
MSRP \$159.00



AQUAGUARD PRO 115L
Page 32
MSRP \$189.00



AQUAGUARD PRO
DUFFLE BAG
Page 33
MSRP \$139.00



AQUAGUARD PRO
DUFFLE BAG
Page 33
MSRP \$159.00



AQUAGUARD PRO
DUFFLE BAG
Page 33
MSRP \$179.00

CAMPING ACCESSORIES



EXTREME SLEEPING
BAG 600,800,1000GSM
Page 34
MSRP \$555.00-
785.00



CAMPING BLANKET
Page 35
MSRP \$129.00



ARCTIC THERMAL
PHONE CASE
Page 36
MSRP \$24.99



POLAR PHONE CASE
Page 36
MSRP \$39.00



IPAD / NOTEBOOK CASE
Page 37
MSRP \$44.00

Designed with field feedback from the **Ministry of Natural Resources (MNR)**, the MNR Series 2M Tent is purpose-built to meet the demanding operational needs of backcountry and field professionals. Every detail has been engineered for durability, stability, and rapid deployment in harsh environments.

The tent features a **catenary cut on all sides**, effectively deflecting wind, improving structural integrity, and reducing noise from fly movement during high winds. Its **PU-coated polyester fly offers a 3000 mm static head waterproof rating**, ensuring reliable protection in prolonged wet conditions.

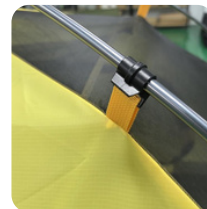
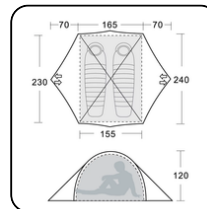
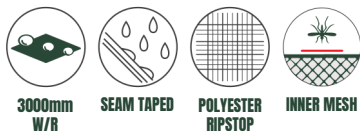
A **150D polyester floor with a 5000 mm static head rating** provides superior abrasion resistance and waterproofing, while **high-tensile 7001 aluminum poles** deliver strength without excess weight. All entry points are equipped with heavy-duty #10 SBS zippers, ensuring dependable performance in demanding field operations, from wildfire response to forestry deployment.



- OVERALL SIZE** L70+165+70 x W240 x H120 cm
- INNER TENT SIZE** L155 x W230 x H115 cm
- SLEEPS** 2 People
- WEIGHT** 3.6 kg
- FLYSHEET MATERIAL** 75D 190T polyester ripstop, PU 3000mm W/R, full seam taped
- INNER TENT MATERIAL** 75D 190T polyester ripstop breathable
- FLOOR MATERIAL** 150D Oxford polyester PU 5000mm W/R
- POLES** 7001 Aluminum poles, dia. 8.5mm x2
- GUY ROPES** PP dia. 3.0mm with reflective flecks x6

- KEY FEATURES** 75D ripstop flysheet, PU 3000 mm, fully seam-taped
- 150D Oxford floor, PU 5000 mm W/R
- 7001 aluminum poles with durable pegs
- Dual O-shaped mesh doors with one-touch zippers
- Two side ventilation caps for airflow and moisture control
- Reinforced, seam-taped corners for durability
- Multiple interior pockets with loft mesh shelf
- Catenary-cut fly with extended panels for wind and rain protection
- 16 anchor points and 6 guy ropes for secure pitching

****Compatible footprint available (sold separately) : 230 cm x 150 cm, 150D Oxford polyester PU 5000mm W/R, Aluminum corner connectors for easy attachment to tent.**



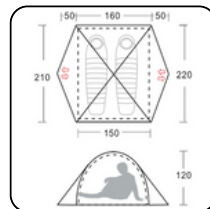
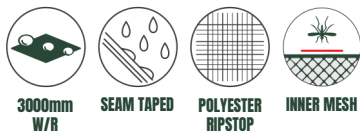
Designed as a compact, field-ready shelter, the **Camping Series 2-Person Tent** is designed for reliability and efficiency in moderate conditions. Constructed from **PU-coated ripstop polyester with fully seam-taped panels**, it provides a **3000 mm waterproof rating** for dependable weather protection during field operations or extended outdoor assignments. Lightweight **7001 aluminum poles** deliver excellent strength-to-weight performance, while **reinforced corners**, durable zippers, and **integrated storage pockets** ensure long-term durability and convenience in demanding environments.



OVERALL SIZE	L50+160+50 × W220 × H120 cm
INNER TENT SIZE	L150 × W210 × H115 cm
SLEEPS	2 people
WEIGHT	3.2 kg
FLYSHEET MATERIAL	75D 190T polyester ripstop, PU 3000 mm W/R, full seam-taped
INNER TENT MATERIAL	68D 190T breathable polyester
FLOOR MATERIAL	75D 190T polyester, PU 5000 mm W/R
POLES	7001 aluminum poles, Ø8.5 mm × 2

- KEY FEATURES**
- O-shaped inner tent door with mesh layer and one-touch zipper
 - Two large side ventilation caps for improved airflow
 - Reinforced and seam-taped inner tent corners for added strength
 - Eight interior storage pockets with mesh gear loft
 - Dual entrances for convenient access
 - 16 anchor points and 6 guy ropes for secure setup
 - Packed in a durable 300D Oxford polyester carry bag

****Compatible footprint available (sold separately) : 210cm x 145 cm, 150D Oxford polyester PU 5000mm W/R, aluminum corner connectors for easy attachment to tent.**



Designed as a dependable shelter for group field use, the **Camping Series 3-Person Tent** is engineered to perform across a wide range of outdoor conditions. Its **catenary-cut profile** and **extended side panels** deflect wind, enhance structural stability, and minimize fly noise during sustained exposure.

The **PU-coated 75D ripstop polyester flysheet** with **fully seam-taped construction** provides a **3000 mm waterproof** barrier, while the **150D Oxford floor** delivers reinforced protection against ground abrasion and moisture. **Dual doors, large mesh panels,** and **optimized ventilation points** promote consistent airflow and interior comfort in variable climates.

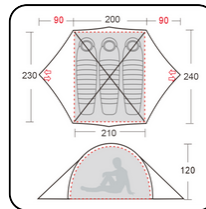
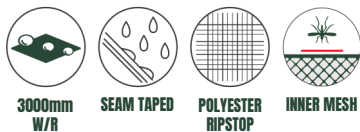
Supported by **high-tensile 7001 aluminum poles** and **heavy-duty SBS zippers**, the Camping Series 3P offers **long-term reliability, rapid setup, and efficient pack-down.**



- OVERALL SIZE** L90+200+90 × W240 × H120 cm
- INNER TENT SIZE** L210 × W230 × H115 cm
- SLEEPS** 3 people
- WEIGHT** 3.40 kg
- FLYSHEET MATERIAL** 75D 190T polyester ripstop, PU 3000 mm W/R, full seam-taped
- INNER TENT MATERIAL** 75D 190T polyester ripstop breathable
- FLOOR MATERIAL** 150D Oxford polyester, PU 5000 mm W/R
- POLES** 7001 aluminum poles, Ø8.5 mm × 2
- GUY ROPES** PP Ø3.0 mm with reflective flecks × 6

- KEY FEATURES**
- Dual entrances with large O-shaped mesh doors and one-touch zippers
 - Two large side ventilation caps for enhanced airflow
 - Reinforced and seam-taped corners for long-lasting durability
 - Multiple interior storage pockets with loft mesh shelf
 - Catenary-cut front and back entry for superior wind stability
 - Extended side panels for improved rain protection
 - 16 anchor points and 6 guy ropes for secure setup
 - Packed in a 300D Oxford polyester carry bag

****Compatible footprint available (sold separately) : 210 cm x 175 cm, 150D Oxford polyester PU 5000mm W/R, aluminum corner connectors for easy attachment to tent.**



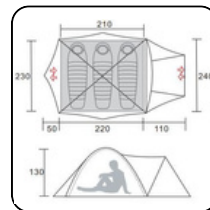
Designed for consistent performance and durability in variable outdoor conditions. Its **catenary-cut flysheet** enhances tension and wind resistance, while **extended side panels** improve rain protection and ground coverage. Constructed from **PU-coated 75D ripstop polyester** with **fully taped seams**, the fly provides a **3000 mm waterproof rating** for dependable defense against the elements. A **150D Oxford polyester floor** with a **5000 mm waterproof base** ensures superior ground protection and abrasion resistance. Supported by **7001 aluminum poles** and **reinforced corners**, the Ontario Series 3P features **dual side entry**, **ventilation caps for optimized airflow**, and an **oversized front vestibule** for gear storage. Designed for **stability, efficiency, and long-term reliability**, it's equally suited for **repeated field deployment** or a **weekend getaway with friends**. The perfect shoulder season tent.



OVERALL SIZE	L110+220+50 × W240 × H130 cm
INNER TENT SIZE	L210 × W230 × H125 cm
SLEEPS	3 people
WEIGHT	5 kg
FLYSHEET MATERIAL	75D 190T polyester ripstop, PU 3000 mm W/R, full seam-taped
INNER TENT MATERIAL	75D 190T polyester ripstop breathable
FLOOR MATERIAL	150D Oxford polyester, PU 5000 mm W/R
POLES	7001 aluminum poles, Ø8.5 mm × 3
GUY ROPES	PP Ø3.0 mm with reflective flecks × 8

- KEY FEATURES**
- Dual entrances with large O-shaped mesh doors and one-touch zippers
 - Two side ventilation caps for airflow
 - Reinforced and seam-taped corners for added strength
 - Multiple interior storage pockets and loft mesh shelf
 - Catenary-cut front and back entry for improved wind stability
 - Extended side panels for enhanced rain protection
 - 19 anchor points and 8 guy ropes for secure setup
 - Packed in a 300D Oxford polyester carry bag

****Compatible footprint available (sold separately) : 230 cm x 205 cm**, 150D Oxford polyester PU 5000mm W/R, aluminum corner connectors for easy attachment to tent.



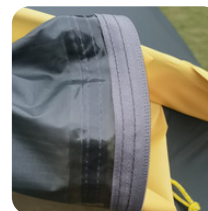
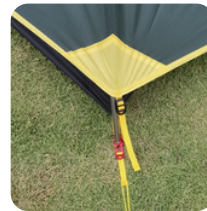
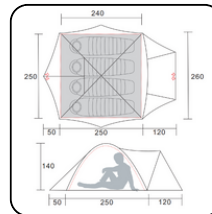
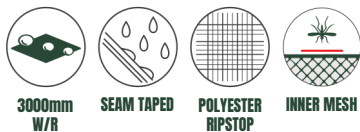


Designed for reliability and long-term durability in diverse outdoor conditions. Its **catenary-cut flysheet** enhances tension and wind resistance, while **extended side panels** provide increased rain coverage and protection from ground splashes. Constructed from **PU-coated 75D ripstop polyester** with **fully seam-taped joints**, the fly delivers a **3000 mm waterproof rating** for consistent weather protection. A **150D Oxford polyester floor** with a **5000 mm waterproof base** ensures abrasion resistance and reliable ground protection. **Reinforced corners, 7001 aluminum poles,** and **#10 SBS zippers** provide structural strength and durability. The tent also **features dual side entry, ventilation caps for optimized airflow, and an oversized front vestibule for gear storage**, making the Ontario Series 4P a dependable choice for **extended field deployment and institutional outfitting**. The perfect shoulder season tent.

OVERALL SIZE	L120+250+50 × W260 × H140 cm
INNER TENT SIZE	L240 × W250 × H135 cm
SLEEPS	4 people
WEIGHT	5.40 kg
FLYSHEET MATERIAL	75D 190T polyester ripstop, PU 3000 mm W/R, full seam-taped
INNER TENT MATERIAL	75D 190T polyester ripstop breathable
FLOOR MATERIAL	150D Oxford polyester, PU 5000 mm W/R
POLES	7001 aluminum poles, Ø11 mm × 2 + Ø9.5 mm × 1
GUY ROPES	PP Ø3.0 mm with reflective flecks × 8

- KEY FEATURES**
- Dual entrances with large O-shaped mesh doors and one-touch zippers
 - Two side ventilation caps for improved airflow
 - Inner tent top ventilation with mesh panel and zippered curtain
 - Reinforced and seam-taped corners for added durability
 - Multiple interior storage pockets and loft mesh shelf
 - 16 anchor points and 8 guy ropes for stability
 - Packed in an Oxford polyester carry bag

****Compatible footprint available (sold separately) : 250 cm x 235 cm,** 150D Oxford polyester PU 5000mm W/R, aluminum corner connectors for easy attachment to tent.



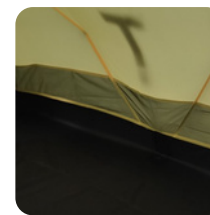
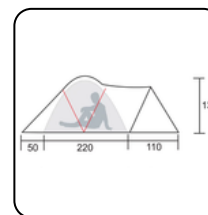
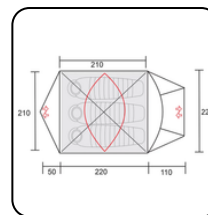


Designed for **severe-weather performance** and **long-term durability** in extreme environments. Its **reinforced five-pole 7001 aluminum frame (8.5 mm diameter)** provides exceptional stability under high winds and heavy snow loads, ensuring reliable shelter in challenging field conditions. Constructed from **PU-coated 75D ripstop polyester with fully seam-taped joints**, the flysheet delivers a **3000 mm waterproof rating** for consistent protection against the elements. A **150D Oxford polyester floor** with a **5000 mm waterproof base** offers complete ground protection and abrasion resistance. **Dual ventilation caps** and a **breathable inner mesh** promote airflow and minimize condensation during extended deployments. Featuring **dual entrances, a large front foyer for gear storage**, and **reinforced corners with heavy-duty SBS zippers**, the Everest Series 3P is built for **professional outfitting, expedition use, and repeated field operations**, yet remains equally suited for the **weekend adventurer**.

- OVERALL SIZE** L110+220+50 × W220 × H130 cm
- INNER TENT SIZE** L210 × W210 × H120 cm
- SLEEPS** 3 people
- WEIGHT** 4.6 kg
- FLYSHEET MATERIAL** 75D 190T polyester ripstop, PU 3000 mm W/R
- INNER TENT MATERIAL** 68D 190T breathable polyester
- FLOOR MATERIAL** 75D 190T polyester, PU 5000 mm W/R
- POLES** 7001 aluminum poles, Ø8.5 mm × 5
- GUY ROPES** PP Ø3.0 mm with reflective flecks × 8

- KEY FEATURES**
- Gear storage vestibule
 - O-shaped door with mesh and one-touch zipper
 - Two side ventilation caps for airflow
 - Reinforced and seam-taped inner corners
 - Multiple interior storage pockets
 - Loft mesh shelf
 - 19 anchor points and 8 guy ropes for secure pitching

****Compatible footprint available (sold separately) : 210 cm x 205 cm**, 150D Oxford polyester PU 5000mm W/R, aluminum corner connectors for easy attachment to tent.



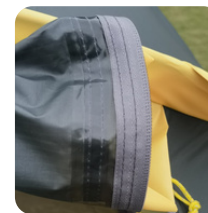
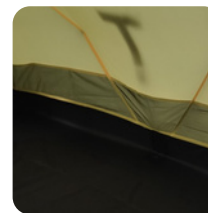
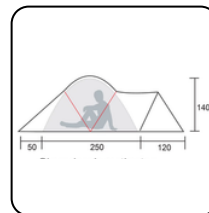
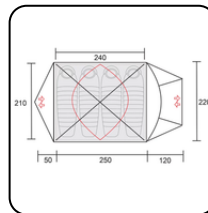
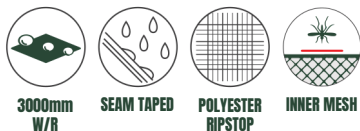
Designed for **severe-weather performance** and **extended durability** in extreme environments. Its reinforced five-pole 7001 aluminum **frame (8.5 mm diameter)** provides exceptional structural integrity under high winds and heavy snow loads, ensuring dependable shelter in challenging field conditions. Constructed from **PU-coated 75D ripstop polyester** with **fully seam-taped joints**, the flysheet offers a **3000 mm waterproof rating** for consistent weather protection. A **150D Oxford polyester floor** with a **5000 mm waterproof base** delivers full ground protection and superior abrasion resistance. **Dual ventilation caps** and a **breathable inner mesh** maintain airflow and reduce condensation during extended deployments. Featuring **dual entrances**, a **large front foyer for gear storage**, and **reinforced corners with heavy-duty SBS zippers**, the Everest Series 4P provides **reliable performance for professional outfitting**, expedition use, and **repeated field operations** while remaining ideal for **multi-day adventures** in harsh conditions.



- OVERALL SIZE** L120+250+50 × W220 × H140 cm
- INNER TENT SIZE** L210 × W240 × H135 cm
- SLEEPS** 4 people
- WEIGHT** 5 kg
- FLYSHEET MATERIAL** 75D 190T polyester ripstop, PU 3000 mm W/R
- INNER TENT MATERIAL** 68D 190T breathable polyester
- FLOOR MATERIAL** 75D 190T polyester, PU 5000 mm W/R
- POLES** 7001 aluminum poles, Ø8.5 mm × 5
- GUY ROPES** PP Ø3.0 mm with reflective flecks × 8

- KEY FEATURES**
- Gear storage vestibule
 - O-shaped door with mesh and one-touch zipper
 - Two side ventilation caps for airflow
 - Reinforced and seam-taped inner corners for durability
 - Multiple interior storage pockets
 - Loft mesh shelf
 - 19 anchor points and 8 guy ropes for secure pitching

****Compatible footprint available (sold separately) : 210 cm x 235 cm**, 150D Oxford polyester PU 5000mm W/R, aluminum corner connectors for easy attachment to tent.

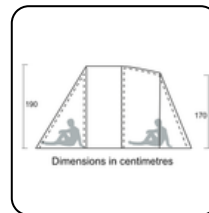
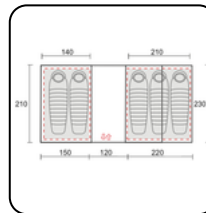
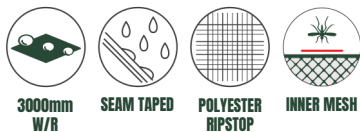




Designed for **durability and comfort**, it's **spacious enough for five** and combines rugged weather protection with a breathable interior to keep nights dry, warm, and comfortable whether at the campsite or deep in the backcountry. Constructed from **PU-coated 75D 190T ripstop polyester**, the flysheet delivers **3000 mm waterproof protection** against rain and wind, while the **68D 190T breathable polyester** inner tent maintains airflow and reduces condensation in changing conditions. A PE floor (120 g/m²) provides dependable ground protection and long-term wear resistance on varied terrain.

Its three-pole **7001 aluminum frame (11 mm diameter)** ensures stability in unpredictable weather while maximizing interior volume for shared comfort. Dual doors and vestibules offer convenient access and ample gear storage, while reinforced stitching and heavy-duty zippers enhance field longevity.

- OVERALL SIZE** L150+120+220 × W240 × H190/170 cm
 - INNER TENT SIZE** Room 1: 230 × 210 cm Room 2: 230 × 140 cm
 - SLEEPS** 5 people
 - WEIGHT** 9.7 kg
 - FLYSHEET MATERIAL** 75D 190T polyester ripstop, PU 3000 mm W/R, full seam-taped
 - INNER TENT MATERIAL** 75D 190T polyester ripstop breathable
 - FLOOR MATERIAL** PE 120 g/m² floor
 - POLES** 7001 aluminum poles, Ø11 mm × 2 + Ø9.5 mm × 1
 - GUY ROPES** PP Ø3.0 mm ropes with reflective flecks × 13
- KEY FEATURES**
- Double-layer tunnel structure with full mesh interior
 - Three windows, including a front window with storm flap and double zipper
 - Inner O-shaped mesh door for easy access and ventilation
 - Detachable PE floor in vestibule area
 - Reinforced corners for added durability
 - Multiple interior storage pockets
 - Packed in an Oxford polyester carry bag
 - 27 anchor points and 13 guy ropes for stability





****No-See-Um Mesh Tent**

a lightweight, breathable shelter offering dependable protection against mosquitoes, midges, and other small insects while maintaining optimal ventilation for warm-weather camping.

Designed for **lightweight efficiency and reliable protection** in variable outdoor conditions. Its aerodynamic profile and compact footprint enhance wind resistance and allow rapid setup, making it ideal for mobile field use or short expeditions.

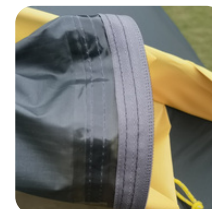
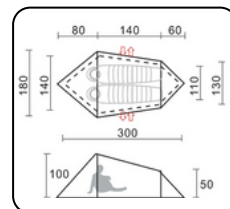
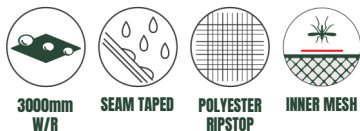
Constructed from a **PU-coated 68D ripstop polyester flysheet with a 3000 mm waterproof rating**, the tent provides dependable weather protection. The **Oxford polyester floor with a 5000 mm waterproof base** ensures abrasion resistance and complete ground protection.

A **“No-See-Um” full mesh inner** improves ventilation and insect protection in **warm-weather environments**. **Reinforced corners, 7001 8.5 mm aluminum poles**, and **precision stitching** provide strength, stability, and long-term durability, all within a **portable, field-ready design**.

- OVERALL SIZE** L300 × W180/130 × H100/50 cm
- INNER TENT SIZE** L280 × W140/110 × H90/40 cm
- SLEEPS** 2 people
- WEIGHT** 2.4 kg
- FLYSHEET MATERIAL** 68D 190T polyester ripstop, PU 3000 mm W/R
- INNER TENT MATERIAL** No-See-Um mesh B3
- FLOOR MATERIAL** 210D Oxford polyester, PU 5000 mm W/R
- POLES** 7001 aluminum poles, Ø8.5 mm × 2
- GUY ROPES** PP Ø3.0 mm with reflective flecks × 4

- KEY FEATURES** L-shaped mesh door on inner tent
- Dual side ventilation caps for airflow
- Reinforced corners for added durability
- Interior storage pockets for essentials
- “No-See-Um” mesh inner for insect protection and ventilation

****Compatible footprint available (sold separately) : 280 cm x 140/110 cm**, 150D Oxford polyester PU 5000mm W/R, aluminum corner connectors for easy attachment to tent.



Designed for **lightweight efficiency** while providing **strength, weather protection,** and **easy packability.** Its **catenary-cut flysheet** enhances tension and wind resistance, while the **PU-coated 75D ripstop polyester** with **fully seam-taped construction** delivers a **3000 mm waterproof rating.** The **150D Oxford polyester floor** provides a **5000 mm waterproof base** for reliable ground protection.

Dual entrances and **ventilation caps** optimize airflow and reduce condensation, while the **7001 aluminum pole system** ensures stability with minimal weight. An **eyebrow pole** increases headroom at the tent entrance for easier access.

Built for **repeated use,** the Light Series 2P offers **durable performance, compact handling,** and versatility for **field applications, weekend adventures, or lightweight outfitting.**

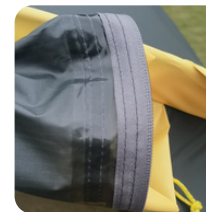
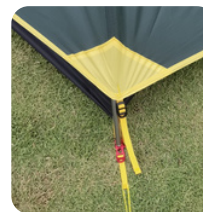
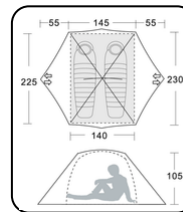
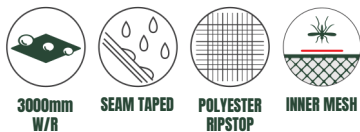


OVERALL SIZE	L55 + 145 + 55 × W230 × H105 cm
INNER TENT SIZE	L140 × W225 × H100 cm
SLEEPS	2 people
WEIGHT	3.4 kg
FLYSHEET MATERIAL	75D 190T polyester ripstop, PU 3000 mm, full seam-taped
INNER TENT MATERIAL	75D 190T polyester ripstop, breathable
FLOOR MATERIAL	150D Oxford polyester, PU 5000 mm
POLES	7001 aluminum poles, Ø8.5 mm × 2
GUY ROPES	PP Ø3.0 mm with reflective flecks × 4

KEY FEATURES

- Dual entrances with large mesh doors for easy access and airflow
- 3000 mm water resistant ripstop flysheet with full seam taping
- 150D Oxford polyester floor with 5000 mm water resistant rating
- Lightweight 7001 aluminum poles for strength and stability
- 12 anchor points and 4 reflective guy ropes for secure pitching
- Two large side ventilation caps to reduce condensation
- Wind-stable catenary-cut design with extended rain panels
- Reinforced and seam-taped corners for durability
- Multiple interior storage pockets with loft mesh shelf
- SBS zippers (#10 main, #8 secondary) for reliable performance
- Packed in a durable Oxford polyester carry bag

****Compatible footprint available (sold separately) : 225 cm x 135 cm,** 150D Oxford polyester PU 5000mm W/R, aluminum corner connectors for easy attachment to tent.

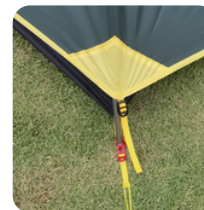
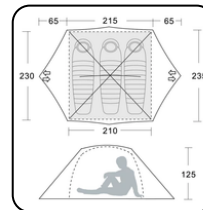
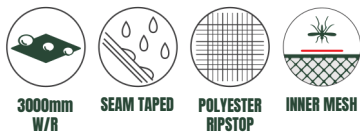




Designed for **efficient performance**, combining **strength, weather protection**, and **packability** in a lightweight structure. Its **catenary-cut flysheet** enhances tension and wind resistance, while the **PU-coated 75D ripstop polyester** with **fully seam-taped construction** delivers a **3000 mm waterproof rating**. The **150D Oxford polyester floor** provides a **5000 mm waterproof base** for superior ground protection. **Dual entrances and ventilation caps** optimize airflow and reduce condensation, while the **7001 aluminum pole system** ensures stability with minimal weight. An **eyebrow pole** increases headroom at the tent entrance for easier access. Built for **repeated use**, the Light Series 3P offers **dependable durability, easy handling**, and versatility for **field applications or compact outfitting**.

- OVERALL SIZE** L65 + 215 + 65 × W235 × H125 cm
 - INNER TENT SIZE** L210 × W230 × H120 cm
 - SLEEPS** 3 people
 - WEIGHT** 4.3 kg
 - FLYSHEET MATERIAL** 75D 190T polyester ripstop PU 3000 mm, full seam-taped
 - INNER TENT MATERIAL** 75D 190T polyester ripstop breathable
 - FLOOR MATERIAL** 150D Oxford polyester PU 5000 mm
 - POLES** 7001 aluminum poles Ø9.5 mm × 2 + Ø8.5 mm × 1
 - GUY ROPES** PP Ø3.0 mm reflective guy ropes × 4
- KEY FEATURES**
- 3000 mm water-resistant ripstop flysheet with full seam taping
 - 5000 mm Oxford polyester floor for enhanced ground protection
 - Lightweight 7001 aluminum poles for superior stability
 - Dual entrances with large mesh doors for easy access and airflow
 - Two large side ventilation caps to reduce condensation
 - Reinforced corners for long-term durability
 - Multiple interior storage pockets with loft mesh shelf
 - Wind-stable catenary-cut design for structural integrity
 - Extended side panels for rain and wind protection
 - Packed in a durable Oxford polyester carry bag

****Compatible footprint available (sold separately) : 230 cm x 205 cm, 150D Oxford polyester PU 5000mm W/R, aluminum corner connectors for easy attachment to tent.**





Designed for **precision performance** where **weight, strength, and reliability** are critical. While not the lightest on the market, it offers an excellent balance of **technical efficiency** and **durable field performance**. Its **double-Y aluminum pole system** provides structural stability with minimal mass. The **20D silicone-coated nylon ripstop flysheet** delivers a **3000 mm waterproof rating** and extended weather protection, while the **30D breathable nylon inner** enhances airflow. A **20D floor** with a **3000 mm waterproof base** ensures reliable ground protection.

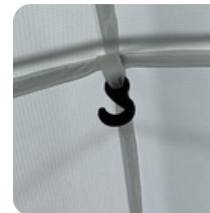
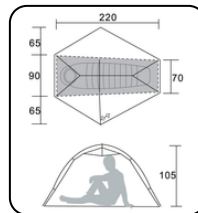
Reinforced seams, high-tensile guy ropes, No-See-Um mesh, and a doggie door enhance protection, ventilation, and usability in challenging environments.

Compact and **field-ready**, the Ultra Light 1P balances **lightweight portability** with **long-term durability**, making it ideal for **solo expeditions** or **technical field operations**.

OVERALL SIZE	L220 × W65 + 90/70 + 65 × H105 cm
INNER TENT SIZE	L140 × W225 × H100 cm
SLEEPS	1 person
WEIGHT	1.6 kg
FLYSHEET MATERIAL	20D 380T nylon ripstop PU + silicone coating 3000 mm
INNER TENT MATERIAL	30D 380T nylon ripstop breathable + 20D nylon mesh B3
FLOOR MATERIAL	20D 380T nylon ripstop PU + silicone coating 3000 mm
POLES	7001 aluminum poles, double Y-shape structure
GUY ROPES	PP Ø2.0 mm reflective guy ropes × 3

KEY FEATURES Front and back flysheet entrances roll up for ventilation
 Flysheet entrances convert to canopy using hiking poles
 Two large ventilation caps for condensation control
 Inner tent with storage pockets and hanging hooks
 14 anchor points and 8 guy ropes for secure pitching in harsh weather

****Compatible footprint available (sold separately) : 220 cm x 85/65 cm, 150D Oxford polyester PU 5000mm W/R, aluminum corner connectors for easy attachment to tent.**



Designed engineered for **precision performance**. While not the lightest on the market, it offers an optimal balance of **weight, strength, and reliability** for **technical field use** or **backcountry expeditions**.

Its **double-Y aluminum pole system** provides structural stability with minimal mass. The **20D silicone-coated nylon ripstop flysheet** delivers a **3000 mm waterproof rating** and extended protection from the elements, while the **No-See-Um mesh inner** promotes airflow. A **20D floor with a 3000 mm waterproof base** ensures durable ground protection.

Dual entrances and a **flysheet canopy** conversion provide versatile use in varied conditions. **Reinforced seams** and **high-tensile guy ropes** enhance protection in challenging environments.

Compact and **field-ready**, the Ultra Light 2P Tent combines **lightweight portability** with **long-term durability**, making it ideal for **two-person expeditions, technical field applications, or extended backcountry use**.



OVERALL SIZE L55 + 140 + 55 × W220 × H110 cm

INNER TENT SIZE L135 × W210 × H105 cm

SLEEPS 2 people

WEIGHT 1.9 kg

FLYSHEET MATERIAL 20D 380T nylon ripstop PU + silicone coating 3000 mm, full seam-taped

INNER TENT MATERIAL 25D nylon mesh B3

FLOOR MATERIAL 20D 380T nylon ripstop PU + silicone coating 3000 mm

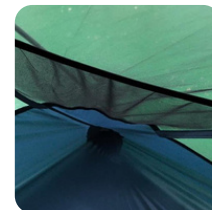
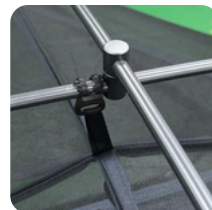
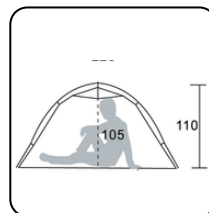
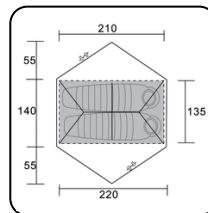
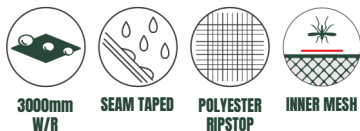
POLES Aluminum T7001 Ø8.5 mm × 1 set

GUY ROPES PP Ø2.0 mm reflective guy ropes × 8

KEY FEATURES

- Front and back flysheet entrances roll up for ventilation
- Flysheet entrances convert to canopy using hiking poles
- Dual entrances for easy access and airflow
- Two large ventilation caps for condensation control
- Inner tent with storage pockets and hanging hooks
- 14 anchor points and 8 guy ropes for secure pitching in harsh weather

****Compatible footprint available (sold separately) : 210 cm x 130 cm, 150D Oxford polyester PU 5000mm W/R, aluminum corner connectors for easy attachment to tent.**



This **premium two-person shelter** is designed for **maximum structural stability** and **long-term reliability**. As one of the **roomiest 2-person tents**, it is engineered for **severe weather** and **repeated field use**, making it ideal for **basecamp** or **extended expedition setups**.

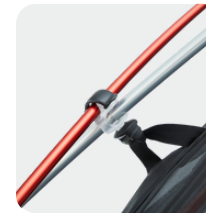
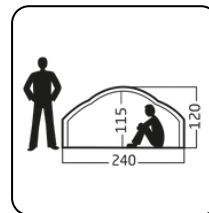
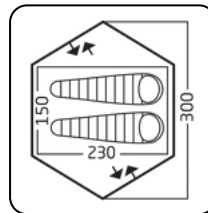
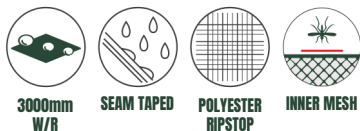
Its **geodesic DAC pole system** (main poles: 9.5 mm and 8.5 mm) with **mechanical fasteners at all cross points** provides **superior wind resistance** and structural strength. The **68D ripstop polyester flysheet** offers a **3000 mm waterproof rating**, while the **150D Oxford polyester floor** with a **8000 mm waterproof base** ensures complete ground protection and durability.

The **No SEE Um Full-mesh** interiors enhance airflow, promote cross-ventilation, and enable rapid moisture dissipation. The tent is secured using **aluminum V-pegs**, **polyester guy ropes**, and **reinforced anchor points**, delivering **dependable performance** where **durability** and **stability** are critical.



- OVERALL SIZE** 240 × 300 × 120 cm
- INNER TENT SIZE** 225 × 150 × 115 cm
- SLEEPS** 2 people
- WEIGHT** 3.7 kg
- FLYSHEET MATERIAL** 68D 210T polyester ripstop, PU 3000 mm W/R
- INNER TENT MATERIAL** Poly mesh
- FLOOR MATERIAL** 150D Oxford polyester, PU 8000 mm W/R
- POLES** DAC poles, main pole Ø9.5 mm + ridge pole Ø8.7 mm
- GUY ROPES** 3.0mm Polyester with plastic sliders

- KEY FEATURES**
 - Dual entrances with vestibules
 - Geodetic dome stability
 - All-mesh inner cabin for maximum ventilation
 - Flysheet opens on all four sides for 360° views and airflow
 - Loft shelf and wall pockets
 - Versatile pitch modes: full tent, fly-only, or mesh-only
 - Footprint included



Designed as a **high-performance canopy** for **extended outdoor deployment** and **basecamp use**. Constructed from **210D Oxford polyester ripstop** with a **dual-side PU 5000 mm waterproof coating**, it provides **reliable protection** against **rain, wind, and sun**.

The **silver-coated interior** helps **regulate temperature** for thermal control, while **reinforced seams** and **steel pegs** ensure **secure anchoring** in variable conditions. Its **open, modular design** offers **flexible coverage** for **equipment, dining, or group shelter**, and it is **compatible with height-adjustable poles** for **versatile setup configurations**. Ideal for **basecamps, field operations, or extended outdoor deployments**, the Tundra Series Protector combines **durability, flexibility, and reliable environmental protection** in a professional-grade canopy.



OVERALL SIZE L450 × W550 × H250 cm

WEIGHT 6.3 kg

FLYSHEET MATERIAL 210D Oxford polyester ripstop PU 5000 mm, silver-coated interior and black exterior for thermal control

PEGS Steel pegs Ø6 mm × 25 cm × 8

GUY ROPES PP reflective guy ropes Ø4.5 mm — 8 m × 2 + 3 m × 4

KEY FEATURES Heavy-duty waterproof Oxford polyester with dual-side coating for thermal and UV protection

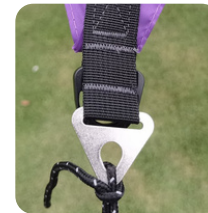
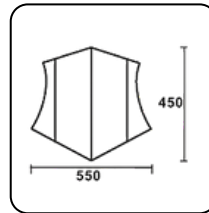
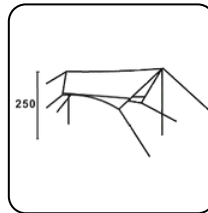
5000 mm water-resistant rating for dependable weather resistance

Reinforced stitching and strong steel pegs for secure anchoring

Reflective guy ropes for nighttime visibility

Suitable for canopy, shelter, or group camping cover

****Compatible with height-adjustable poles (sold separately)**



UNIVERSAL ADJUSTABLE POLES



The **Height Adjustable Aluminum Poles** are designed for versatile field setup and long-term durability. Each pole features a **telescopic aluminum alloy structure** with a 19 mm diameter and 1.0 mm wall thickness, extending from 204 cm to 240 cm. Designed for precision and ease of use, the locking knob mechanism ensures secure **height adjustment and stability under tension**. Finished with reinforced tips for tarp and shelter compatibility, the set includes two poles packed in a durable Oxford polyester carry bag for organized storage and transport.

OVERALL SIZE 204–240 cm / 80.3–94.5 in

DIAMETER 19 mm / 0.75 in

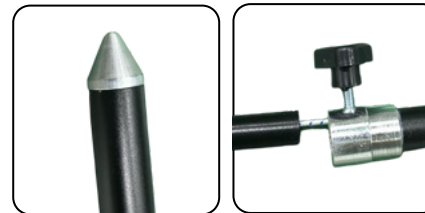
THICKNESS 1.0 mm / 0.04 in

MATERIAL Aluminum Alloy

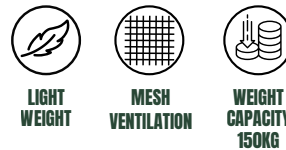
WEIGHT 1.05 kg (per set) / 2.32 lb

KEY FEATURES Lightweight and corrosion-resistant
Adjustable telescopic design
Reinforced tip for secure grip
Compact and easy to pack
Includes carrying bag (Oxford Polyester Stuff Bag)

**** Compatible Models: Bug Shelter / Thundra Protector**



Designed for **dependable support** and **stability** during extended outdoor use. Its **reinforced 6013 aerospace aluminum frame** with **stabilizing crossbar** maintains balance on uneven terrain while supporting up to 150 kg. The **600D Oxford seat** with **PU coating** and **breathable mesh panels** provides long-term durability and ventilation in varied conditions. Weighing only **1.6 kg**, the chair **folds quickly** into a **bottle-sized carry bag** for efficient transport. An **integrated cup holder** adds convenience for field setups or leisure use. Ideal for **field setups, basecamps, or event operations**, the Basecamp Series Chair combines **reliability, comfort, and portability** in a **lightweight, durable design**.



OVERALL SIZE 65 × 58 × 80 cm (25.6" × 22.8" × 31.5")

WEIGHT 1.6 kg (3.5 lbs)
FRAME MATERIAL Steel frame / 6013 aluminum alloy
FABRIC MATERIAL TPU & PP, 600D high-density Oxford PU coating
WEIGHT CAPACITY 150 kg (330 lbs)
COLOUR Black with cream trim

KEY FEATURES 360° swivel comfort for easy movement
 Lightweight and durable aluminum frame
 Ergonomic 45° backrest with breathable mesh
 Quick fold-out setup with ground sheet for stability
 Ideal for camping, fishing, sports, and outdoor events



Anti-Sag Foot Sleeves
 · Reinforced design prevents sinking and adds stability on soft ground.



Quick open, 6013 Aluminum Alloy Bracket
 · Strong, lightweight frame engineered for durability and reliable support.

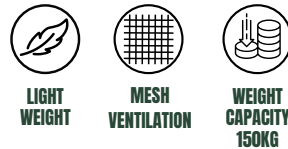


Compact and quick to set up.
 unfolds in seconds with anti-tilt stability.



Easy-pack carry bag

Designed for **comfort and versatility** during extended outdoor use. Its **6013 aerospace aluminum alloy frame** and **600D Oxford PU-coated fabric** provide a **150 kg load capacity** while keeping the **chair compact at 2.25 kg**. The **360° swivel mechanism** allows smooth rotation for full mobility, supported by **anti-sag foot sleeves** and a **stabilizing ground sheet** for uneven terrain. A **45° ergonomic backrest** with **mesh ventilation** and an **integrated cup holder** delivers reliable comfort and stability. Ideal for **basecamps, field operations**, or recreational use, the Basecamp Series Swivel Chair combines **portability, durability, and functional comfort** in a lightweight design.



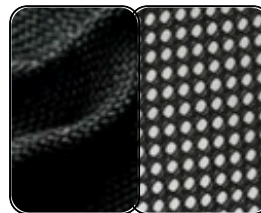
OVERALL SIZE 62 × 60 × 76 cm (24.4" × 23.6" × 29.9")

WEIGHT 2.25 kg (5.0 lbs)
FRAME MATERIAL 6013 aluminum alloy
FABRIC MATERIAL TPU & PP, 600D high-density Oxford PU coating
WEIGHT CAPACITY 150 kg (330 lbs)
COLOUR Black with cream trim

KEY FEATURES Foldable design with cup holder and carry bag
 360° swivel for smooth rotation and comfort
 Lightweight yet strong — supports up to 150 kg
 Ergonomic 45° backrest with breathable mesh and stable frame
 Quick fold-out setup with ground sheet for uneven terrain
 Ideal for camping, fishing, tailgating, sports, barbecues, and backpacking



Smooth 360° rotation



Durable 600D High-density Oxford + Mesh fabric design keeps airflow steady for cool, dry comfort.



Anti-Sag Foot Sleeves · Reinforced design prevents sinking and adds stability on soft ground.



Quick open, 6013 Aluminum Alloy Bracket · Strong, lightweight frame engineered for durability and reliable support.



Compact and quick to set up, unfolds in seconds with anti-tilt stability.



LIGHT WEIGHT



OXFORD PU COATED



WEIGHT CAPACITY 200KG

OVERALL SIZE 190 × 68 × (17/40) cm (74.8" × 26.8" × (6.7"/15.7"))

WEIGHT 3.0 kg (6.6 lbs)

FRAME MATERIAL 6013/7075 aluminum alloy

FABRIC MATERIAL TPU & PP, 1000D high-density Oxford PU coating

WEIGHT CAPACITY 200 kg (440 lbs)

COLOUR Black with cream trim

KEY FEATURES Lightweight foldable cot for compact storage and transport
 Stable 3-leg aluminum frame for balance and durability
 Quick tension-lock system for fast assembly and secure setup
 Heavy-duty 1000D Oxford fabric for strength and comfort
 Reinforced stitching and corner loops for extra stability
 Adjustable height design suitable for uneven terrain
 Integrated side pocket for small gear and essentials
 Includes durable carry bag for easy portability
 Ideal for camping, backpacking, and basecamp sleeping setups



****Stable 3-leg aluminum frame** for balance and durability



Adjustable height design suitable for uneven terrain



Integrated side pocket for small gear and essentials



Reinforced stitching and corner loops for extra stability



Easy-pack carry bag

Designed for **durability and portability** in field and camp environments. Its **7075 aluminum alloy frame** and **600D Oxford PU-coated fabric top** provide a **50 kg load capacity** while keeping the table **lightweight at only 0.8 kg**. The **reinforced cross-frame** structure and **non-slip rubber feet** ensure stability on uneven terrain, while the **high-density fabric top** delivers reliable surface strength for **cooking, gear organization, or meal preparation**. Compact and **easy to assemble**, the table **packs neatly into its carry bag** for **quick deployment** at camp, on the trail, or in base operations.



LIGHT WEIGHT



OXFORD PU COATED



WEIGHT CAPACITY 50KG



OVERALL SIZE 59.5 × 40 × 39.5 cm (23.4" × 15.7" × 15.5")

WEIGHT 0.8 kg (1.76 lbs)

FRAME MATERIAL 7075 Aluminum Alloy

FABRIC MATERIAL 600D High-Density Oxford PU Coating

WEIGHT CAPACITY 50 kg (110 lbs)

COLOUR Black with cream trim

KEY FEATURES Compact, foldable design for easy storage and transport
 Stable aluminum alloy frame ensures lightweight durability
 Non-slip rubber feet for secure grip on various surfaces
 High-density Oxford fabric for strength and comfort
 Includes carry bag for convenient portability
 Ideal for outdoor camping, picnics, or as a side table





Designed for **modern backcountry travel**, combining **lightweight performance** with **lasting comfort**. Constructed from **40D nylon with antimicrobial TPU lamination**, it provides a **clean, durable, and water-resistant surface** for extended outdoor use.

Weighing only **0.75 kg**, the mat offers an **8.5 cm inflated thickness** and an **R-Value of 3.6**, delivering **reliable ground insulation**. The **dual Twin-Lock valve system** allows **fast inflation and deflation**, while its **ultra-packable size** fits easily into any backpack.

Designed for **comfort, hygiene, and practicality**, the Light Series Mat is ideal for **trekking, basecamp setups, or emergency field deployment**.



LIGHT WEIGHT



TPU LAMINATED



R-VALU



INFLATED THICKNESS

- OVERALL SIZE** 195 × 63 × 8.5 cm (76.8" × 24.8" × 3.3")
- WEIGHT** 0.75 kg (1.65 lbs)
- FABRIC** 40D nylon with anti-microbial TPU lamination
- R-VALUE** 3.6
- INFLATED THICKNESS** 8.5 centimeter
- COLOR** Grey

- KEY FEATURES** Easy-to-pack design that self-inflates and rolls up compactly
- Easy Valve system for maximum airflow during inflation and deflation
- 3.6 R-value for ground warmth
- 8.5 cm inflated thickness for enhanced comfort
- 40D nylon fabric with anti-microbial TPU lamination
- Lightweight (0.7 kg) and ultra-packable
- Water-resistant and PFC-free construction
- Durable and easy to clean for long-term outdoor use



Inflate







Deflate



*Ultra-Packable



Designed for **comfort and packability** for fast-moving backcountry travel. Its **integrated pillow** and **40D nylon body laminated with antimicrobial TPU** provide **durability, moisture resistance, and hygiene** in a single compact design. With an **8.5 cm inflated thickness** and **R-Value of 3.6**, the mat delivers **reliable insulation** for a restful night in varied conditions. The **Twin Lock valve** ensures **quick airflow control** for effortless setup and packing. Weighing just **0.7 kg** and folding down to **bottle-size**, the Light Series P-Mat is engineered for **performance where every gram and inch of space matters**, making it ideal for **backcountry travel, expeditions, or lightweight camping**.

			
LIGHT WEIGHT	TPU LAMINATED	3.6 R-VALU	8.5 INFLATED THICKNESS

OVERALL SIZE 186 × 60 × 8.5 cm (73.2" × 23.6" × 3.3")
WEIGHT 0.7 kg (1.54 lbs)
FABRIC 40D nylon with anti-microbial TPU lamination
R-VALUE 3.6
INFLATED THICKNESS 8.5 centimeter
COLOR Green




KEY FEATURES Built-in pillow for added comfort
 Easy-to-pack design that self-inflates and rolls up compactly
 Easy Valve system for maximum airflow during inflation and deflation
 3.6 R-value for ground warmth
 8.5 cm inflated thickness for enhanced comfort
 40D nylon fabric with anti-microbial TPU lamination
 Lightweight (0.7 kg) and ultra-packable
 Water-resistant and PFC-free construction
 Durable and easy to clean for long-term outdoor use





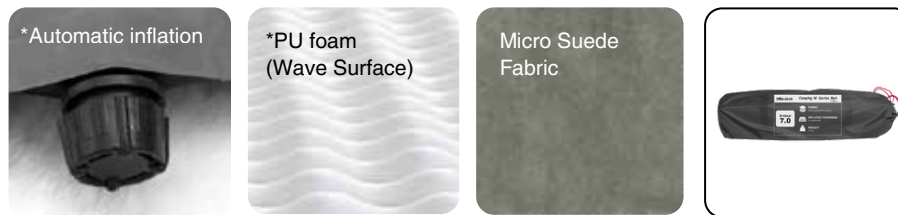
Designed for **cold-weather expeditions**, where **warmth and durability** are critical. Its **7.0 R-Value** and **7 cm PU foam core** provide **effective insulation** against frozen ground and snowpack, maintaining body heat throughout the night.

A **micro-suede top layer** ensures soft comfort, while the **PVC-coated base** enhances **protection and longevity**. The **automatic inflation system** allows **quick setup**, balancing **thermal performance** with **convenience**. Ideal for **harsh terrain**, the Camping W Series Mat 7.0 R-V delivers **dependable comfort** for **winter camping, expeditions, or extreme outdoor conditions**.

		
PVC-COATED	R-VALU	INFLATED THICKNESS




OVERALL SIZE	198 × 63 × 7.0 cm (78" × 25" × 2.8")
WEIGHT	2.7 kg (6.0 lbs)
FABRIC	Micro suede / PVC coating
R-VALUE	7.0
INFLATED THICKNESS	7.0 centimeter
COLOR	Grey

- KEY FEATURES**
- 7.0 R-value for superior insulation and warmth retention
 - Self-inflating design for quick and effortless setup
 - 7 cm thick foam mattress for maximum comfort and body support
 - Micro suede top layer for a soft and premium sleeping surface
 - Automatic inflation valve system for fast air intake and easy deflation
 - Water-resistant and easy-to-clean surface
 - Durable PVC-coated bottom for enhanced protection and longevity



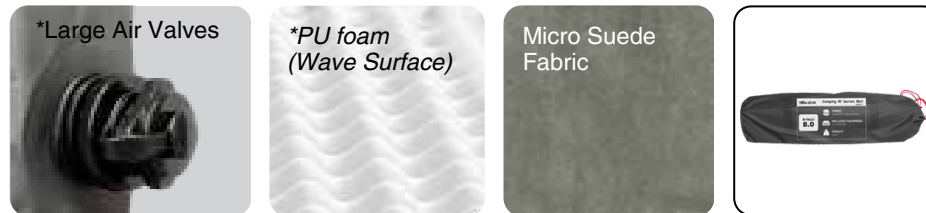


Designed for **maximum insulation** and **luxury-level comfort**, ideal for **basecamps** and **extended car camping**. Its **10 cm open-cell foam core** and high **R-Value of 8.0** provide **reliable warmth**, even on **frozen ground**. A **micro-suede surface** delivers a **soft, premium feel**, while the **heavy-duty PVC base** ensures **strength, moisture resistance, and long-term durability**. **Twin large air valves** allow **quick inflation and deflation**, and the **self-inflating design** simplifies camp setup. Built for **rugged performance** without compromising comfort, the Camping W Series Mat 8.0 R-V offers **superior support and reliable warmth** in extreme outdoor conditions.

		
OPEN-CELL FOAM	R-VALU 8.0	INFLATED THICKNESS 10

OVERALL SIZE	190 × 85 × 10.0 cm (75" × 33.5" × 4")
WEIGHT	4.5 kg (9.9 lbs)
FABRIC	Micro suede + Open-cell foam
R-VALUE	8.0
INFLATED THICKNESS	10.0 centimeter
COLOR	Grey

- KEY FEATURES**
- 10 cm thick foam mattress for superior comfort and insulation
 - Micro suede top for soft, premium feel
 - Heavy-duty PVC base for durability and ground protection
 - Self-inflating design for easy setup
 - Two large air valves for fast inflation and deflation
 - Water-resistant surface for added protection
 - Includes carry bag for transport and storage





Designed for **adventure** and engineered for **protection**, the **Aquaguard Pro 40L Backpack** keeps your gear **dry in any condition**. Constructed from **840D TPU-laminated nylon** with a **waterproof roll-top closure**, it provides **rugged durability** and complete weather resistance.

Designed for **versatility**, the backpack features a **padded laptop sleeve**, **mesh pocket**, and **ergonomic support system** for **long-wear comfort**. **Reinforced buckles**, **compression straps**, **daisy chains**, and **water-resistant zippers** ensure **reliability** in **trail, travel, or urban environments**.

Ideal for **outdoor adventures, commuting, or extended travel**, the Aquaguard Pro 40L Backpack combines **durability, organization, and weatherproof protection** in a **versatile, field-ready design**.

OVERALL SIZE	23 × 34 × 68 cm (9" × 13.4" × 26.8")
CAPACITY	40L
MATERIAL	840D TPU-laminated nylon (420D roll top)
WEIGHT	1.5 kg
COLOUR	Grey + Black

KEY FEATURES	Waterproof roll-top closure for secure protection
	Durable TPU-laminated nylon construction
	Internal laptop sleeve with exterior mesh pocket
	Water-resistant zippers for enhanced weather protection
	Padded shoulder straps with adjustable sternum support
	DURAFLEX® Buckles



The **HD 15 and HD 20 Dry Bags** are **compact, durable, and fully waterproof**, keeping your essentials safe from **rain, spray, and dust**. Constructed from **840D TPU-laminated nylon** with **welded seams**, they rank among the **strongest waterproof fabrics** on the market, providing **long-lasting protection**.

The **roll-top closure** ensures a **secure, watertight seal**, while **detachable shoulder straps** offer **versatile carry options**. Lightweight yet tough, these dry bags are ideal for **kayaking, hiking**, or packing inside the **Aquaguard Pro Backpack**.

Available in **15 L and 20 L** capacities, the HD Series Dry Bags combine **reliability, versatility, and rugged durability** for all your **outdoor adventures**.

OVERALL SIZE	15L: 8" × (15" + 5") / 51 cm height
	20L: 9" × (19" + 5") / 61 cm height
MATERIAL	840D TPU-laminated nylon (420D roll top)

KEY FEATURES	Waterproof roll-top closure
	Removable shoulder strap
	Lightweight and durable TPU material
	Reinforced seams

****Compatible with Aquaguard Pro 40L Backpack**



Designed for **demanding conditions**, the **Aquaguard Pro Canoe Pack** delivers **maximum waterproof protection** and **lasting strength**. Constructed from **heavy-duty 840D TPU-laminated nylon** with a **reinforced 1200D base**, it is one of the **strongest packs in the industry**, resisting **abrasion and wear** during **repeated portages** and **extended expeditions**.

Fully welded seams and a **roll-top closure** provide a **watertight seal**, while **adjustable padded shoulder straps**, **sternum support**, and a **waist belt** ensure **balanced comfort under load**. **Dual rubber handles** simplify lifting, and **D-ring anchor points** offer **secure tie-down options**.

Available in **75 L and 115 L capacities**, the Aquaguard Pro Canoe Pack combines **durability, waterproof protection, and versatile packing** for **serious outdoor expeditions**.



**WATERPROOF
TPU**



**WELDED
SEAMS**

OVERALL SIZE 75L: 61 × 41 × 30 cm (24" × 16" × 12")
115L: 84 × 48 × 33 cm (33" × 19" × 13")

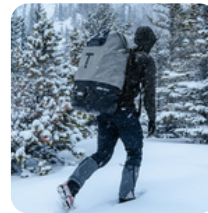
FABRIC Durable and waterproof 840D TPU with 1200D bottom

WEIGHT 1.8 kg (75L) / 2.5 kg (115L)

CAPACITY 75L / 115L

COLOR Grey + Black

KEY FEATURES Heavy-duty waterproof TPU body with welded seams
Reinforced 1200D base for superior abrasion resistance
Roll-top closure for complete waterproof sealing
Adjustable padded shoulder, sternum, and waist straps
Dual rubber handles for easy lifting and transport
D-ring attachment points for securing extra gear
DURAFLEX® Buckles



Designed for rugged travel and wet environments, the **Aquaguard Pro Duffle Bag** provides **reliable waterproof protection** in **40 L, 55 L, and 80 L capacities**. Constructed from **heavy-duty 840D TPU-laminated fabric** with **fully welded seams**, it safeguards gear against **water, dust, and abrasion**. **Convertible straps** allow the bag to be carried as a **duffle or backpack**, while **reinforced grab handles** and an **air-tight deflation valve** enable **quick air removal** for **easy packability**. Ideal for **boating, diving, or travel**, the Aquaguard Pro Duffle Bag delivers **durable, adaptable performance** wherever **adventure leads**.



40L



55L



80L



OVERALL SIZE	40L: 56 × 32 × 25 cm (22" × 12.75" × 10") 55L: 67 × 32 × 25 cm (26.5" × 12.75" × 10") 80L: 89 × 32 × 25 cm (35" × 12.75" × 10")
FABRIC	840D TPU
WEIGHT	1.0 kg (40L) / 1.36 kg (55L) / 1.45 kg (80L)
CAPACITY	40L / 55L / 80L
COLOR	Grey + Black

- KEY FEATURES**
- Available in three capacities: 40L, 55L, and 80L
 - Convertible design — use as duffle or backpack
 - Heavy-duty 840D TPU construction for rugged durability
 - Fully welded seams for superior water resistance
 - Reinforced grab handles for easy lifting
 - Dual air valves for quick inflation and deflation
 - Protects contents from dust, sand, and moisture
 - Ideal for diving, boating, camping, and travel





Designed for **subzero conditions**, the **Extreme Sleeping Bag** delivers **reliable warmth, comfort, and protection** when temperatures drop well below freezing.

Featuring **high-loft microfiber insulation** and a **2.5-layer PTFE shell**, it provides **waterproof, windproof, and breathable performance**, ideal for **extreme camping, hunting, and alpine expeditions**.

Available in **600, 800, or 1000 GSM insulation weights**, the bag offers comfort down to **-20°C, -30°C, and -40°C**, respectively. Its **seamless bottom design** eliminates cold spots and prevents moisture entry, ensuring dry, consistent insulation through long, harsh nights.

Surprisingly, all this performance is achieved in a bag weighing under 9 lbs, making it one of the **lightest synthetic sleeping bags for extreme conditions**.



**2.5-LAYER
PTFE**



**1 PIECE
BOTTOM**



**FOR
SUBZERO
CONDITIONS**

OVERALL SIZE	86 × 220 × 40 cm (34" × 87" × 16")
FABRIC	2.5-layer PTFE waterproof, windproof, and breathable shell
WEIGHT	3.6 kg (600 GSM) / 4.1 kg (800 GSM) / 4.5 kg (1000 GSM)
INSULATION	Synthetic sheet — 600, 800, or 1000 GSM
COLOR	Red/Black, Camo/Black, Yellow/Black

- KEY FEATURES**
- Oversized mummy cut designed for freezing temperatures and comfort
 - Sewn-in draft flaps at zipper and chest for improved heat retention
 - Adjustable fitted hood with drawstring and barrel lock
 - Durable #10 zipper for smooth entry and exit
 - Outdoor-insulated side pocket and half-length side zip for ventilation
 - Polyester taffeta lining for added comfort
 - Side baffles minimize cold spots and heat loss
 - Seamless bottom for enhanced water resistance

***1 Piece bottom** (no stitch lines, no seams) Our uniquely designed sleeping bag stands out with a seamless bottom, eliminating any entry points for dampness, ensuring a dry and comfortable experience.

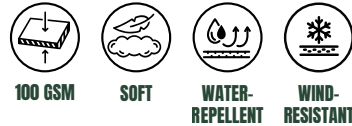
****Includes duffle-style storage and carry bag**



CAMPING BLANKET

CAMPING ACCESSORIES

Built for versatility, the **TREQA Camping Blanket** combines technical performance with everyday comfort. It features a **100 GSM microfiber insulation** core for warmth, a **ripstop taffeta exterior** for durability, and a **soft fleece underside** for cozy comfort at camp. **Lightweight and packable**, it's the go-to layer for fireside evenings or crisp morning hikes. The included stuff sack makes storage simple and compact, ready to travel wherever your adventure leads.



OVERALL SIZE	134.5 × 213 cm (53" × 84")
FABRIC	Durable ripstop taffeta / fleece
INSULATION	100 GSM microfiber insulation sheet
COLOR	Camo, Blue, Lime, Yellow, Red

- KEY FEATURES**
- 100 GSM microfiber insulation for warmth and comfort
 - Wind-resistant and water-repellent taffeta side
 - Soft fleece side for cozy feel
 - Durable ripstop construction for long-lasting use
 - Easy to clean and maintain
 - Easy to pack — includes stuff sack

****Versatile use as a blanket or wrap for outdoor activities**



PHONE CASE

CAMPING ACCESSORIES



Arctic Thermal Phone Case



Polar Phone Case (With front pocket)

When temperatures drop, the TREQA Thermal Phone Case keeps your device protected and functional. Designed with 200 GSM microfiber insulation and a 2.5-layer waterproof ripstop shell, it shields against cold, wind, and moisture. Trusted by the Canadian Armed Forces, it's field-tested for extreme weather reliability. The Polar version includes an additional front pocket for accessories or cables — both models ensure your phone stays warm, dry, and operational when conditions are unforgiving.



- OVERALL SIZE** 3.5" × 7.25" (9 × 18.5 cm)
- FABRIC** Durable ripstop taffeta
- INSULATION** 200 GSM microfiber insulation
- COLOR** Red, Lime, Orange, Yellow, Blue

- KEY FEATURES** Made from tough ripstop fabric
- Durable water-repellent (DWR) coating
- 200 GSM hypoallergenic synthetic insulation

***2.5 layer water-proof fabric**

****Tested by Canadian Armed Forces**





Ipad Case

OVERALL SIZE 3.5" × 7.25" (9 × 18.5 cm)
FABRIC Durable ripstop taffeta
INSULATION 200 GSM microfiber insulation
COLOR Red, Camo, Blue

KEY FEATURES Insulates electronics to help prolong battery life in cold weather
 Water-repellent ripstop shell protects from rain and snow
 Wind-resistant construction shields devices from harsh conditions
 Lightweight and packable for easy transport
 Easy-to-clean materials for lasting performance



Notebook Case

OVERALL SIZE 13.5" × 11" (34 × 28 cm)
FABRIC Durable ripstop taffeta
INSULATION 200 GSM microfiber insulation
COLOR Red, Camo, Blue

KEY FEATURES Insulates electronics to help prolong battery life in cold weather
 Water-repellent ripstop shell protects from rain and snow
 Wind-resistant construction shields devices from harsh conditions
 Lightweight and packable for easy transport
 Easy-to-clean materials for lasting performance

TENTS | SHELTERS | CAMPING FURNITURE
MATS | BAGS | ACCESSORIES

COPYRIGHT 2026© TREQA™

31 TABER RD., ETOBICOKE, ON M9W 3A7
TEL: 1-844-518-7352 EMAIL : INFO@TREQAWEAR.COM